

AT&T testing in area for KC-St. Louis relay route

Test towers set north of Windsor, near Deepwater

Jan. 10, 1963 📞 *The Clinton Eye* (Clinton, Missouri)

Testing is going on north of Windsor for a proposed new radio relay route between Kansas City and St. Louis.

Engineers of the American Telephone and Telegraph's Long Lines department are testing radio relay building and tower sites between Oak Grove and Cole Camp.

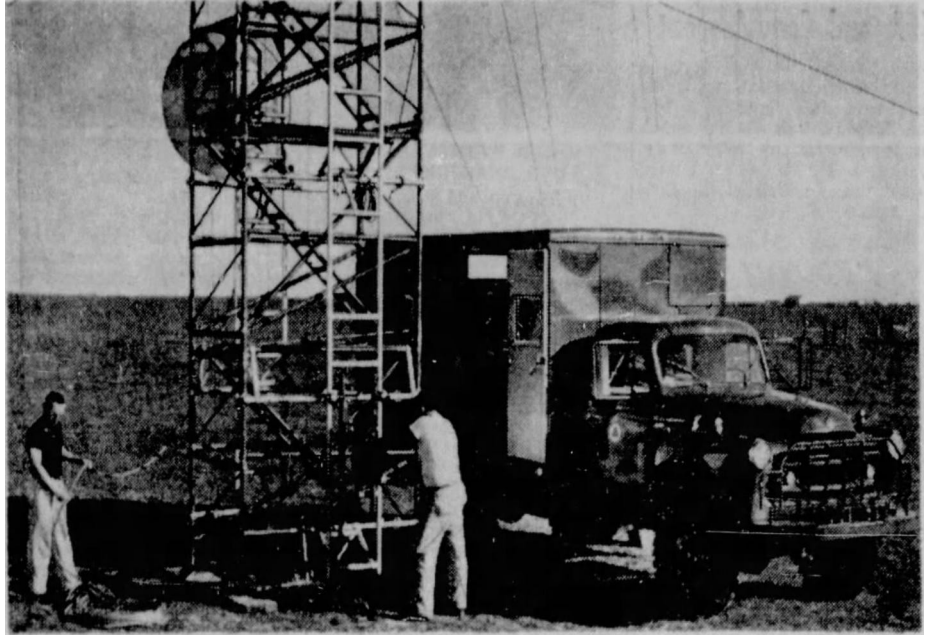
The route will be the second radio relay route linking the two cities. It will provide for increased long distance calling across Missouri to other parts of the nation.

After proposed sites have been tested, Long Lines will request Federal Communications Commission approval to proceed with construction of 11 radio towers and buildings. With FCC approval, construction is scheduled to begin late this summer. The new skyway would then be available for service in the spring of next year.

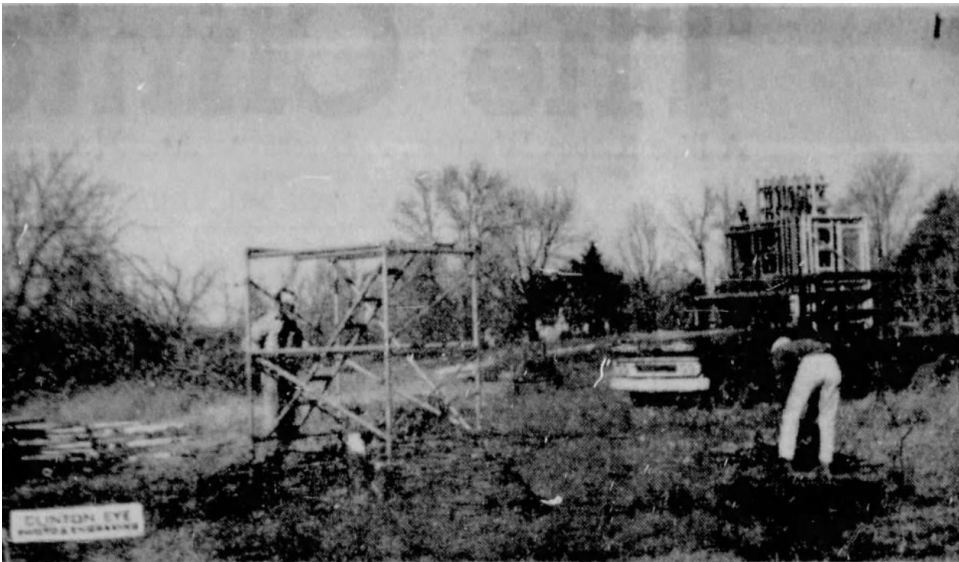
A portable microwave tower, resembling a huge erector set, has been raised north of Windsor to test the radio transmission paths between stations.

The test towers, which seem to spring up overnight and disappear just as quickly, come in 50, 200-pound, six-foot collapsible sections transported on flatbed trucks. The aluminum sections are assembled by fitting the legs of one section into the section below.

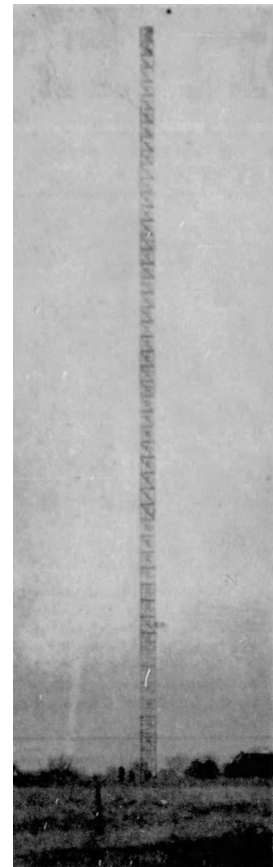
A 10-man crew can assemble a 300-foot tower in a day and disassemble it in considerably less time. Crews progress along a proposed route in leap-frog fashion. While testing is going on between two towers, a third is being erected. The first tower is then dismantled and moved down the line to become number three.



An AT&T company crew adjusts the dish-type antenna elevation to determine the required height necessary to support permanent antennas for reliable radio transmission between proposed relay points. The movable antenna slides up the track of the portable test tower under control of the winch operated by one of the crewmen. Electronic equipment mounted in the truck is used to measure the radio signal strength transmitted between proposed sites.



TOP: The first section of American Telephone and Telegraph test tower at the C.C. Foster farm just west of Deepwater is shown being leveled Tuesday morning. Sections of the 300-foot tower lay on the ground at the left margin with others loaded in the truck at the extreme right. A technician is shown at the lower right uncoiling rope which is used to hoist the six-foot sections, each weighing 200 pounds, for erecting the temporary tower in preparation for testing line-of-sight radio relay transmission.



During tests, radio receivers and transmitters are moved up and down a track on the side of the tower. Trucks containing a power supply and highly complex electronics go right along with the portable towers. Engineers test for the most reliable transmission path between towers, and from their measurements also determine the height required for a permanent tower.

Bell System radio relay routes carry long distance telephone calls, network radio and television programs, and high-speed data across country.

Nine-man crew in area

W.E. Goodall, Tucson, Arizona, is line foreman of the crew reputed to be the fastest in the AT&T organization. Other members of the crew working in the area are: R.L. Arnold, Joplin, Missouri; K.L. Gustin, Yates Center, Kansas; T.E. Jackson, Forrest City, Arkansas; J.R. Klasing, Effingham, Illinois; D.W. Poage, Perry, Missouri; D.E. Rich and J.C. Ricketts, Belleview, Missouri; and G.C. Sloan, Ft. Scott, Kansas.

###

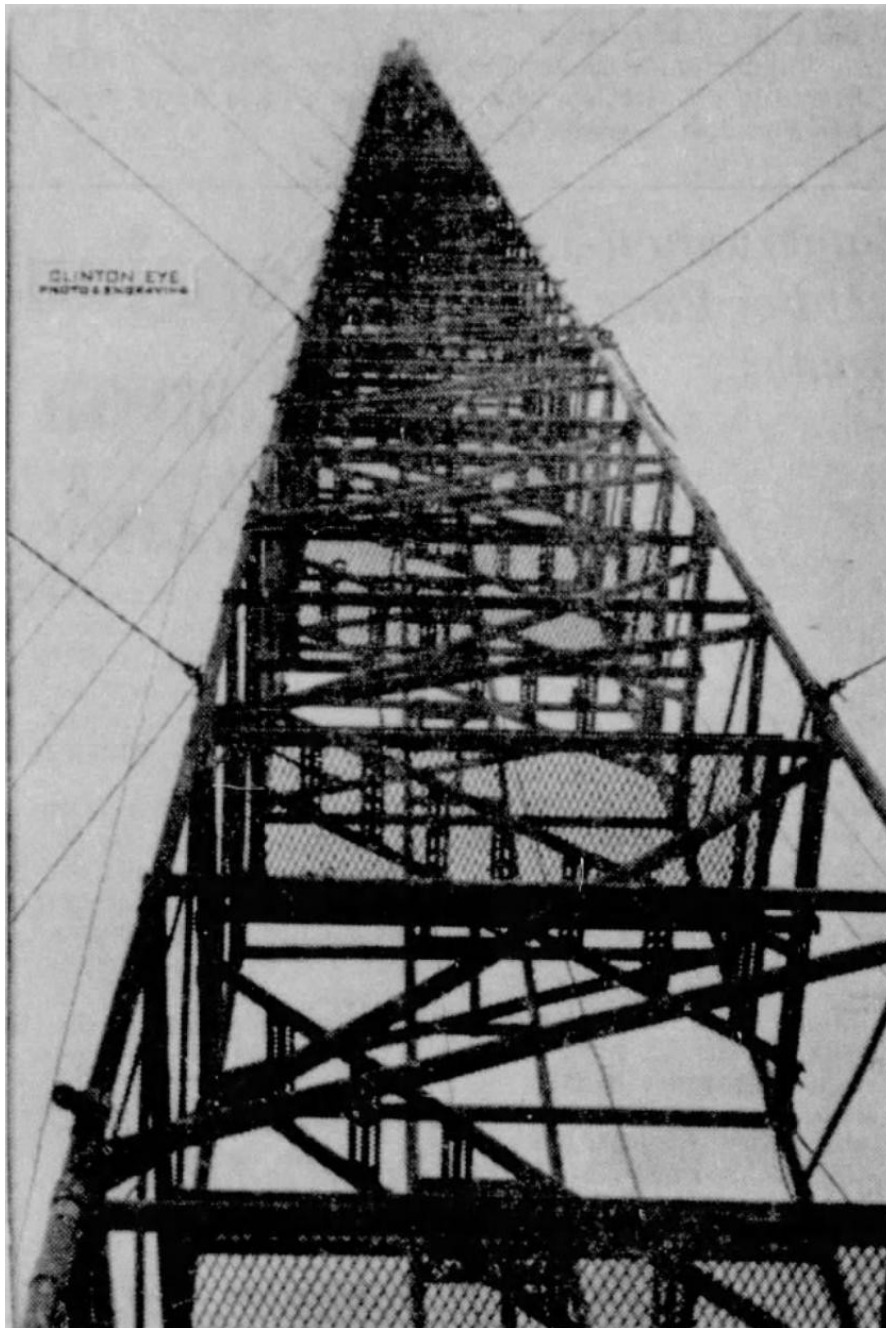
Article transcribed 1-1-2025. Original URL:

<https://shsmo.newspapers.com/image/335209284/>

Windsor site page:

<https://personal.garrettfuller.org/blog/att-long-lines/missouri-long-lines-sites/long-lines-site-windsor-mo/>

A 300-FOOT TOWER ERECTED IN SIX HOURS was the record of the reputed fastest AT&T crew which set this tower Friday alongside Route WW, approximately three and one-half miles north of Windsor. Three workmen are faintly visible that foggy afternoon as they completed erection at the top extremity. The "crack" AT&T crew can disassemble the portable tower in just two hours and six minutes.



A PORTABLE MICROWAVE TEST TOWER was raised Friday north of Windsor on Route WW for testing line-of-sight radio transmission paths between proposed radio relay sites. The 300-foot test towers arrive on flatbed trucks — each of the 50 collapsible six-foot aluminum sections weighing 200 pounds. The legs of the sections are “snapped” together for quick erection and dismantling. Area test towers, which precede eventual permanent towers, if approved by the Federal Communications Commission, have been, or will be, positioned at Oak Grove, Holden, Windsor, Cole Camp and Deepwater. The AT&T crew arrived Tuesday at the C.C. Foster farm near Deepwater for erecting a test tower that day a mile west of the junction of Highway 13 and 52 and seven-tenths of a mile north.